

2.3.3 PEDESTRIAN AND CYCLEWAY BRIDGES

2.3.3.2 WALK-THRU

GENERAL DESCRIPTION

For the 'U' cross section, the vertical walls of the U act as the combined beam (flexural member) and railing with the walkway slab connecting the beams. They may be constructed as single-U beams for spans to about 15 m. Beyond this span, individual beams with transverse precast slabs or segmental-U prestressed concrete construction is used.

Shade and weather canopies are readily provided with this form of construction, as is low-level lighting in the side walls.

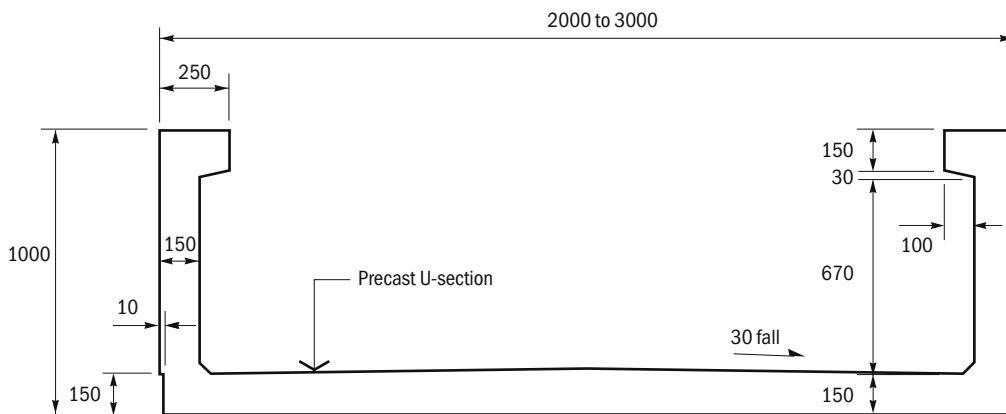
COMPONENT DETAILS

Because each situation requires individual design, no standard sections with corresponding properties can be provided. However, in *Typical Sections*, dimensional details are given for two types of walk-thru pedestrian and cycleway bridges.

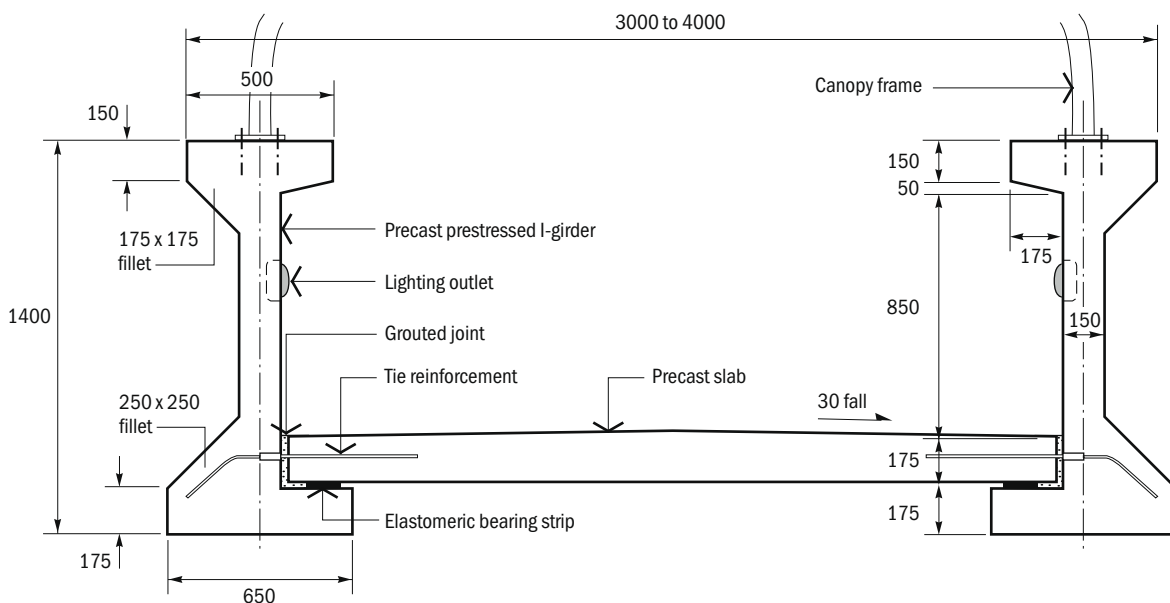
The first detail is for a single unit walk-thru and the second is for individual beams with precast walkway. The individual beams are based on modified I-girders and would be suitable for up to a 30-m span.

Most components are produced using a Special Class concrete, strength grade S50. Where prestressed, the strength at transfer of prestress should be limited to 32 MPa with a maximum of 35 MPa.

TYPICAL SECTIONS



SINGLE-UNIT WALK-THRU PEDESTRIAN OR CYCLEWAY BRIDGE



INDIVIDUAL BEAMS WALK-THRU PEDESTRIAN OR CYCLEWAY BRIDGE